



INDOFINE Chemical Company, Inc.

121 Stryker Lane, Bldg. 30, Suite 1 • Hillsborough, NJ 08844 • U.S.A.

Phone: (908) 359-6778 • FAX: (908) 359-1179

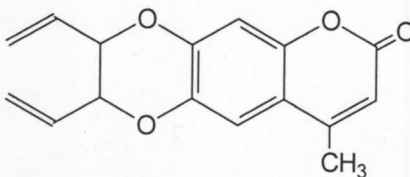
website: www.indofinechemical.com

e-mail: chemical@indofinechemical.com

CERTIFICATE OF ANALYSIS

Cat No.: 19-306

<u>Product:</u>	6,7-DIALLYLOXY-4-METHYLCOUMARIN
<u>Lot Number:</u>	0007159
<u>Molecular Formula:</u>	C ₁₆ H ₁₆ O ₄
<u>M.W.:</u>	272.31
<u>Melting Point:</u>	81.5-83°C
<u>Appearance:</u>	Pale brown powder
<u>Solubility:</u>	Soluble in Chloroform
<u>TLC:</u>	Hexane:Ethyl acetate (1:1)
<u>Purity(HPLC):</u>	98.51%
<u>Storage:</u>	Cool, dry place





INDOFINE Chemical Company, Inc.

121 Stryker Lane, Bldg. 30, Suite 1 • Hillsborough, NJ 08844 • U.S.A.

Phone: (908) 359-6778 • FAX: (908) 359-1179

website: www.indofinechemical.com

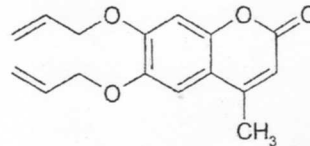
e-mail: chemical@indofinechemical.com

HPLC ANALYSIS

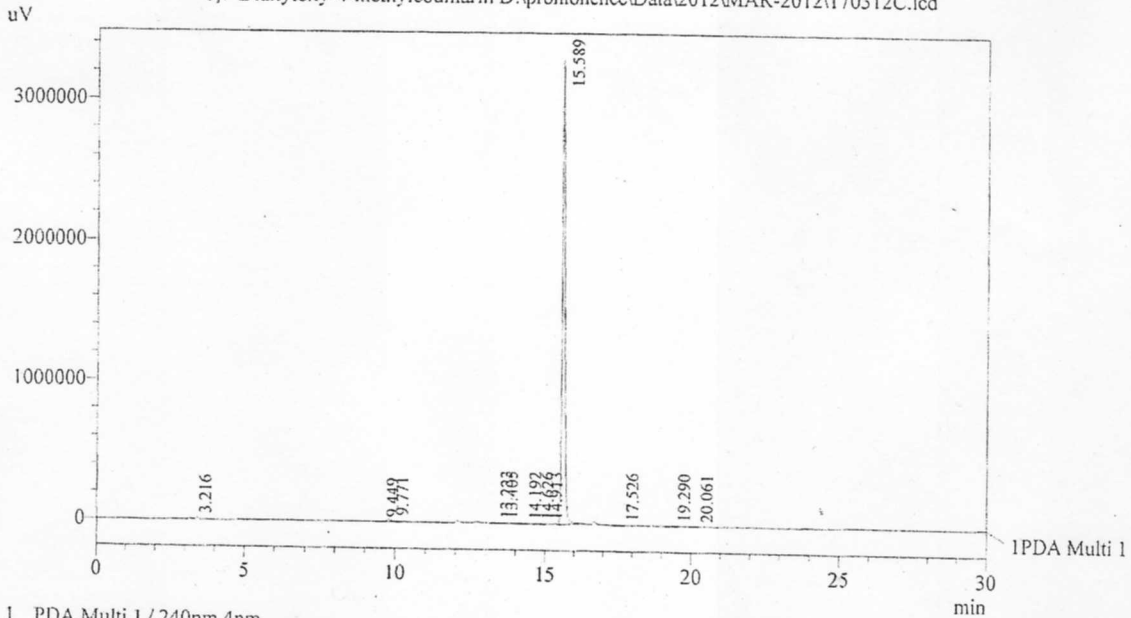
Acquired by : Sanjeev
Sample Name : 6,7-Diallyloxy-4-methylcoumarin
Sample ID : Lot No:-0007159
Injection Volume : 20 uL
Data Filename : 170312C.lcd
Method Filename : Linear Gradient.M.lcm

Catalog No.: 19-306
Product name: 6,7-Diallyloxy-4-methylcoumarin
Lot No.: 0007159

Date Acquired : 3/17/2012 1:13:05 PM
Data Processed : 3/17/2012 2:43:55 PM
Column : LUNA C-18(2), (250mm x4.6mm 5.0µ)
Flow : 1.000 mL/min.
Mobile Phase : A(0.05% TFA in water) B(Acetonitrile)
0.01 90 10
12.0 10 90
20.0 10 90
23.0 90 10
30.0 90 10



Chromatogram
6,7-Diallyloxy-4-methylcoumarin D:\promonence\Data\2012\MAR-2012\170312C.lcd



1 IPDA Multi 1 / 240nm 4nm

PeakTable

PDA Ch1 240nm 4nm

Peak#	Name	Ret. Time	Area	Area %	Relative Retention Time
1	RT:3.216	3.216	70201	0.33	0.21
2	RT:9.449	9.449	8220	0.04	0.61
3	RT:9.771	9.771	136860	0.64	0.63
4	RT:13.223	13.223	15105	0.07	0.85
5	RT:13.405	13.405	13831	0.06	0.86
6	RT:14.192	14.192	10266	0.05	0.91
7	RT:14.626	14.626	3928	0.02	0.94
8	RT:14.913	14.913	4541	0.02	0.96
9	RT:15.589	15.589	21085820	98.51	1.00
10	RT:17.526	17.526	11112	0.05	1.12
11	RT:19.290	19.290	41473	0.19	1.24
12	RT:20.061	20.061	3286	0.02	1.29
Total			21404643	100.00	

ICC **INDOFINE Chemical Company, Inc.**

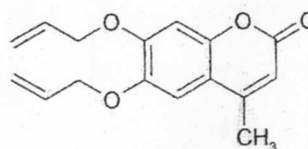
121 Stryker Lane, Bldg. 30, Suite 1 • Hillsborough, NJ 08844 • U.S.A.

Phone: (908) 359-6778 • FAX: (908) 359-1179

website: www.indofinechemical.com

e-mail: chemical@indofinechemical.com

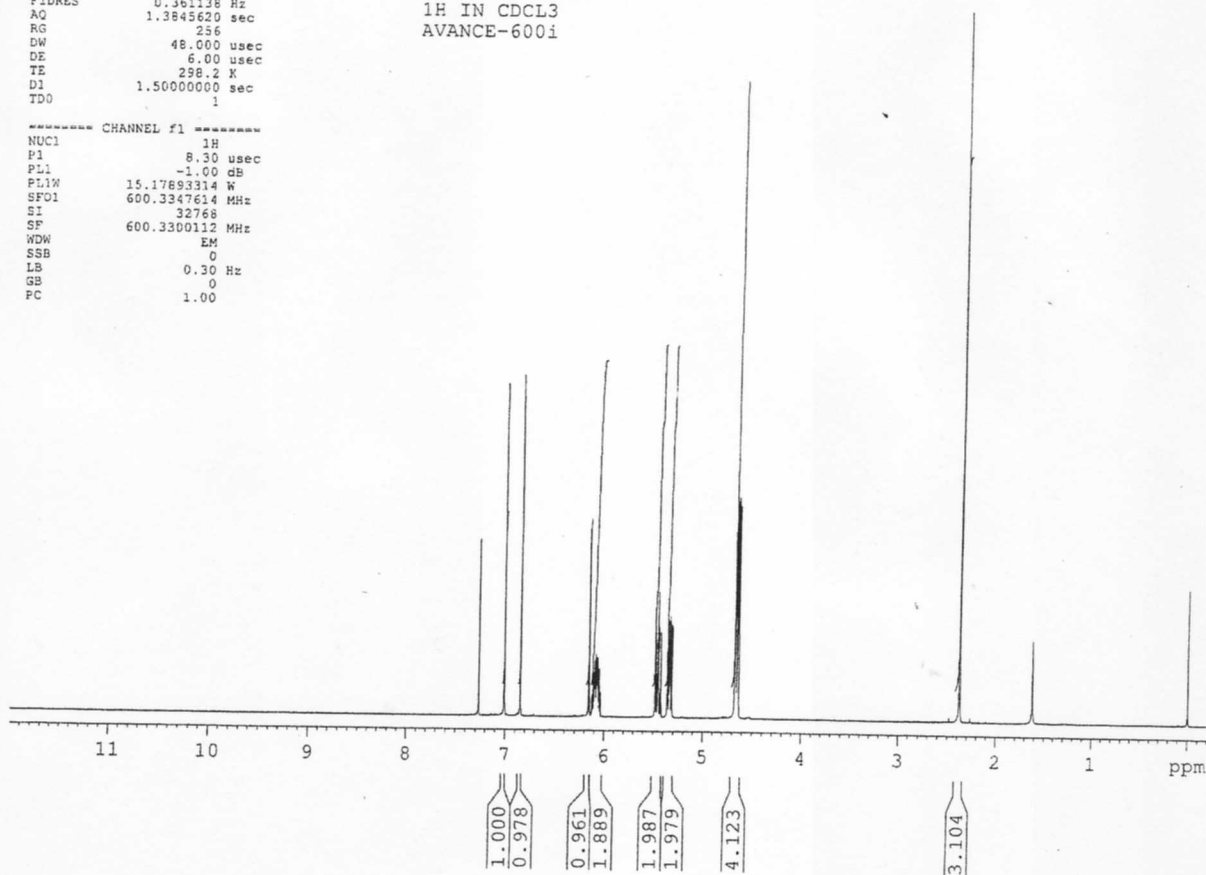
Catalog No.: 19-306
Product name: 6,7-Diallyloxy-4-methylcoumarin
Lot No.: 0007159



SOLVENT CDCL3
NS 16
DS 0
SWH 10416.667 Hz
FIDRES 0.361138 Hz
AQ 1.3845620 sec
RG 256
DW 48.000 usec
DE 6.00 usec
TE 298.2 K
D1 1.5000000 sec
TDO 1

ICC-12 March
1H IN CDCL3
AVANCE-600i

----- CHANNEL f1 -----
NUC1 1H
P1 8.30 usec
PL1 -1.00 dB
PL1W 15.17893314 W
SFO1 600.3347614 MHz
SI 32768
SF 600.3300112 MHz
WDW EM
SSB 0
LB 0.30 Hz
GB 0
PC 1.00





INDOFINE Chemical Company, Inc.

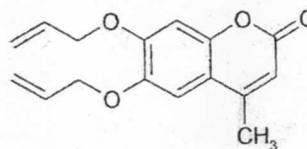
121 Stryker Lane, Bldg. 30, Suite 1 • Hillsborough, NJ 08844 • U.S.A.

Phone: (908) 359-6778 • FAX: (908) 359-1179

website: www.indofinechemical.com

e-mail: chemical@indofinechemical.com

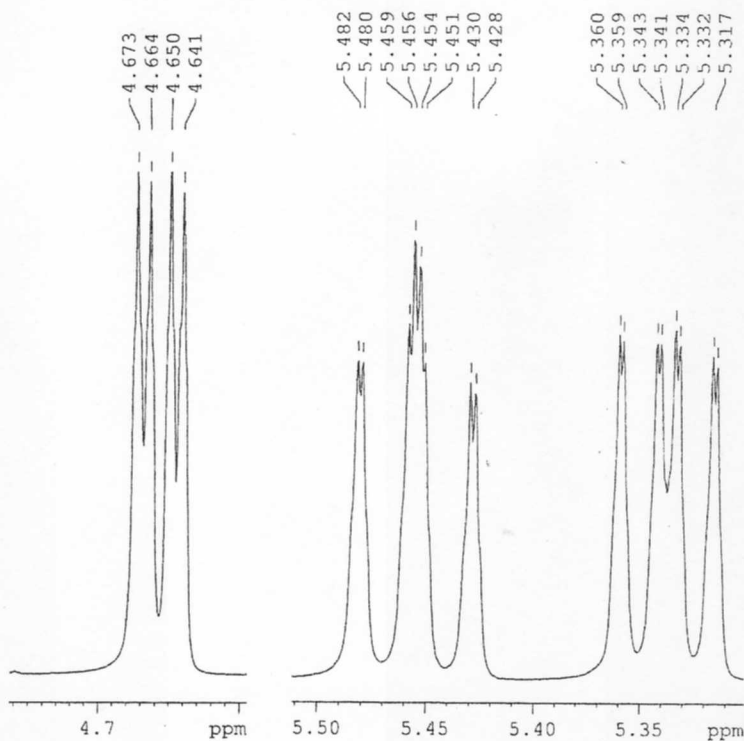
Catalog No.: 19-306
Product name: 6,7-Diallyloxy-4-methylcoumarin
Lot No.: 0007159



SOLVENT CDCl3
NS 16
DS 0
SWH 10416.667 Hz
FIDRES 0.361138 Hz
AQ 1.3845620 sec
RG 256
DW 48.000 usec
DE 6.00 usec
TE 298.2 K
D1 1.5000000 sec
TDO 1

ICC-12 March
1H IN CDCL3
AVANCE-600i

***** CHANNEL f1 *****
NUC1 1H
P1 8.30 usec
PL1 -1.00 dB
PL1W 15.17893314 W
SFO1 600.3347614 MHz
SI 32768
SF 600.3300112 MHz
WDW EM
SSB 0
LB 0.30 Hz
GB 0
PC 1.00



ICC INDOFINE Chemical Company, Inc.

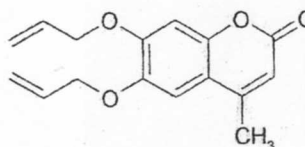
121 Stryker Lane, Bldg. 30, Suite 1 • Hillsborough, NJ 08844 • U.S.A.

Phone: (908) 359-6778 • FAX: (908) 359-1179

website: www.indofinechemical.com

e-mail: chemical@indofinechemical.com

Catalog No.: 19-306
Product name: 6,7-Diallyloxy-4-methylcoumarin
Lot No.: 0007159



SOLVENT CDCl3
NS 16
DS 0
SWH 10416.667 Hz
FIDRES 0.361138 Hz
AQ 1.3845620 sec
RG 256
DW 48.000 usec
DE 6.00 usec
TE 298.2 K
D1 1.5000000 sec
TDO 1

ICC-12 March
1H IN CDCl3
AVANCE-600i

----- CHANNEL f1 -----
NUC1 1H
P1 8.30 usec
PL1 -1.00 dB
PL1W 15.17893314 W
SFO1 600.3347614 MHz
SI 32768
SF 600.3300112 MHz
WDW EM
SSB 0
LB 0.30 Hz
GB 0
PC 1.00

